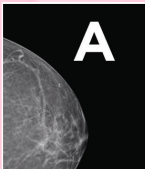
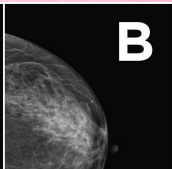
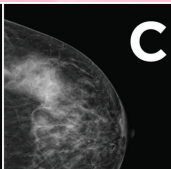
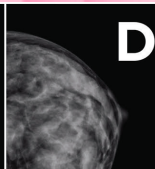


Early Detection, Lifesaving Results

Your Mammogram Determined That You Have Dense Breast Tissue

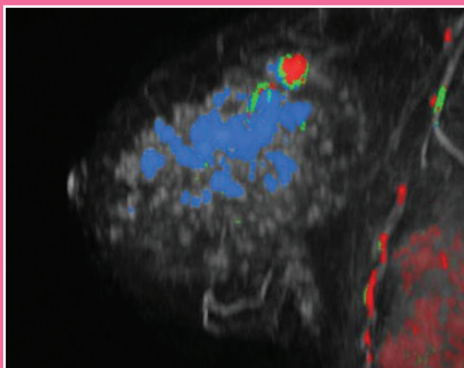
- Some cancers can hide in dense breast tissue on a mammogram
- Women with dense breasts are at an increased risk for breast cancer
- Breast density—the amount of dense tissue compared to fatty tissue—is determined by a radiologist when viewing the breasts under mammography.
- Breast density is categorized into four levels:

			
A Almost Entirely Fatty 25% dense breast tissue – abnormalities easy to detect	B Scattered Density 25-50% of breast tissue is fatty	C Heterogeneously Dense 50-75% dense breast tissue	D Extremely Dense Greater than 75% of the breast tissue is dense

- **Talk to your doctor about having a supplemental Breast MRI**
 - Breast MRI detects 95% of invasive breast cancers
- **Continue having a mammogram once a year**
 - A mammogram should still be used in conjunction with a Breast MRI
- **Perform self breast exams routinely**

Breast MRI

Makes It Much Easier
To Detect Any Cancers
Hiding In Dense Tissue



ABOVE: Color-enhanced MRI showing cancers in dense breast tissue (low-grade cancers green, intermediate-grade cancers blue and high-grade cancers red.

OUR MISSION

We are dedicated to the fight against breast cancer in the Cincinnati tri-state community by providing critical education, unwavering support, and early detection services, including free Mammograms and Breast MRI for eligible patients.

PROSCAN
pink ribbon centers

CRIS COLLINSWORTH
PROSCAN
Fund

**To Schedule An Appointment:
513-241-CURE (2873) or go to
proscan.com/online-scheduling/**